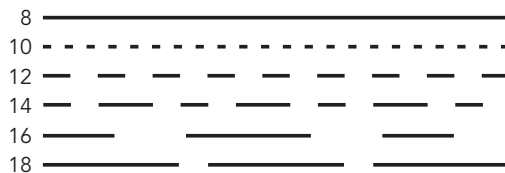
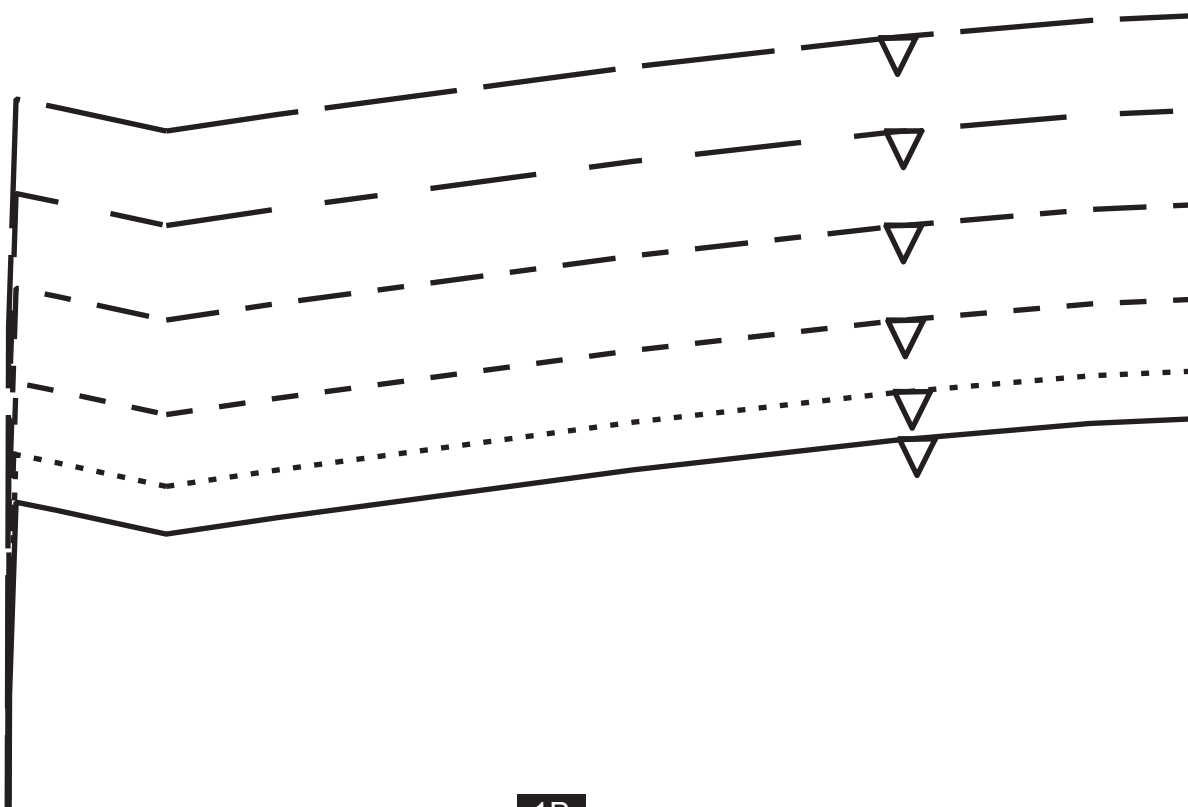


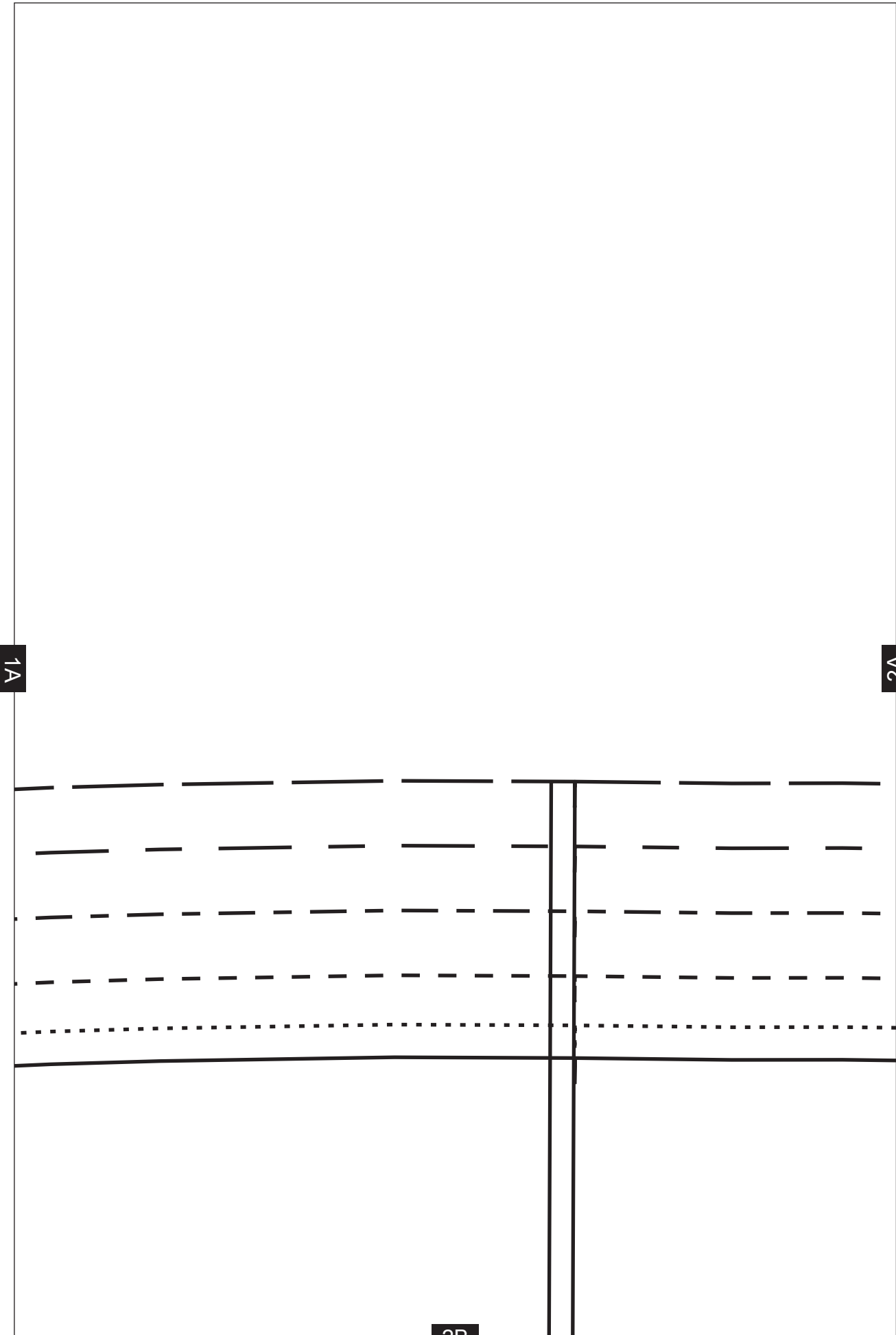
# THE GREAT BRITISH *Sewing Bee*

Silk tunic pattern  
Project design © Love Productions 2013  
This design is protected by copyright  
and must not be made for resale.



1A

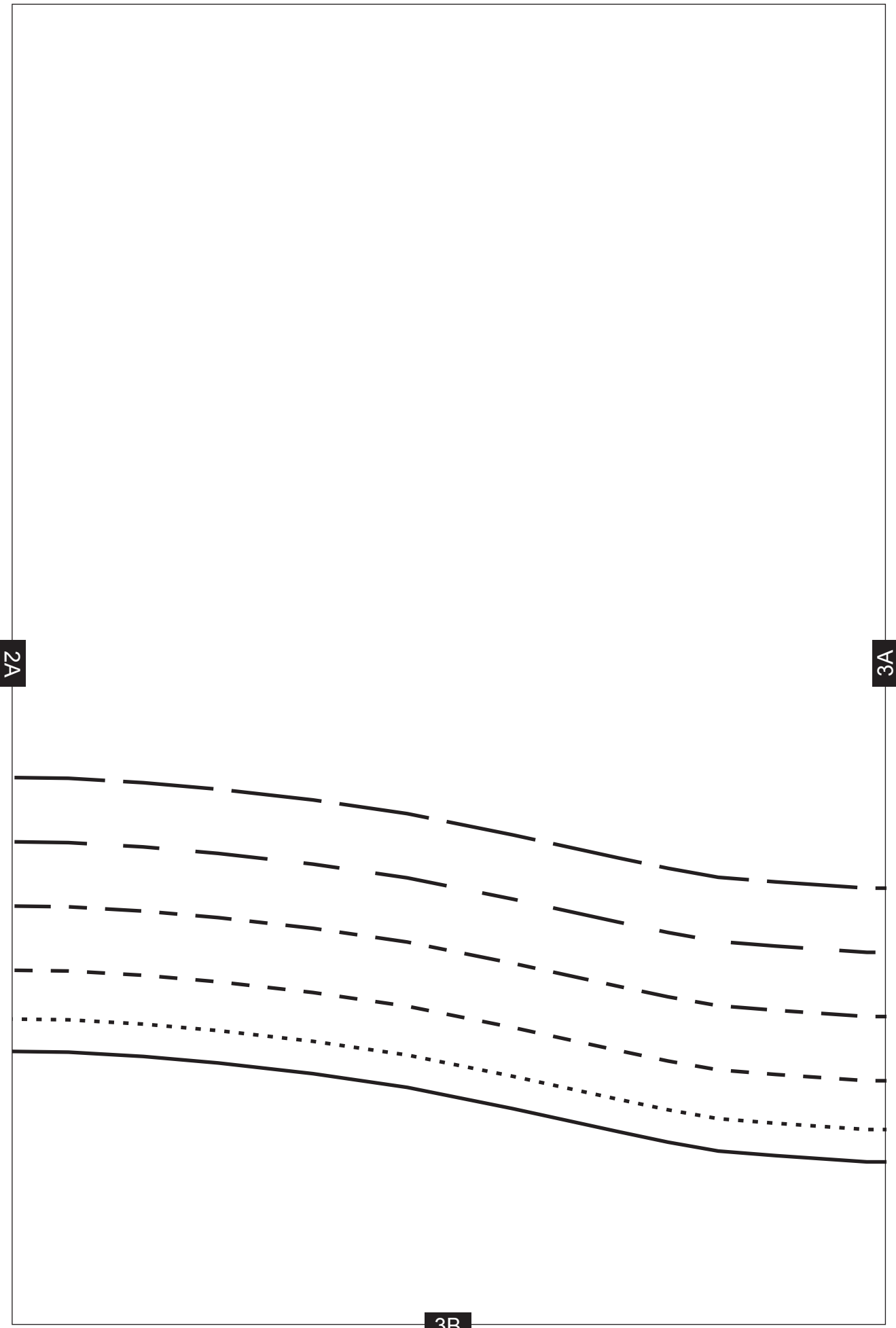




1A

2A

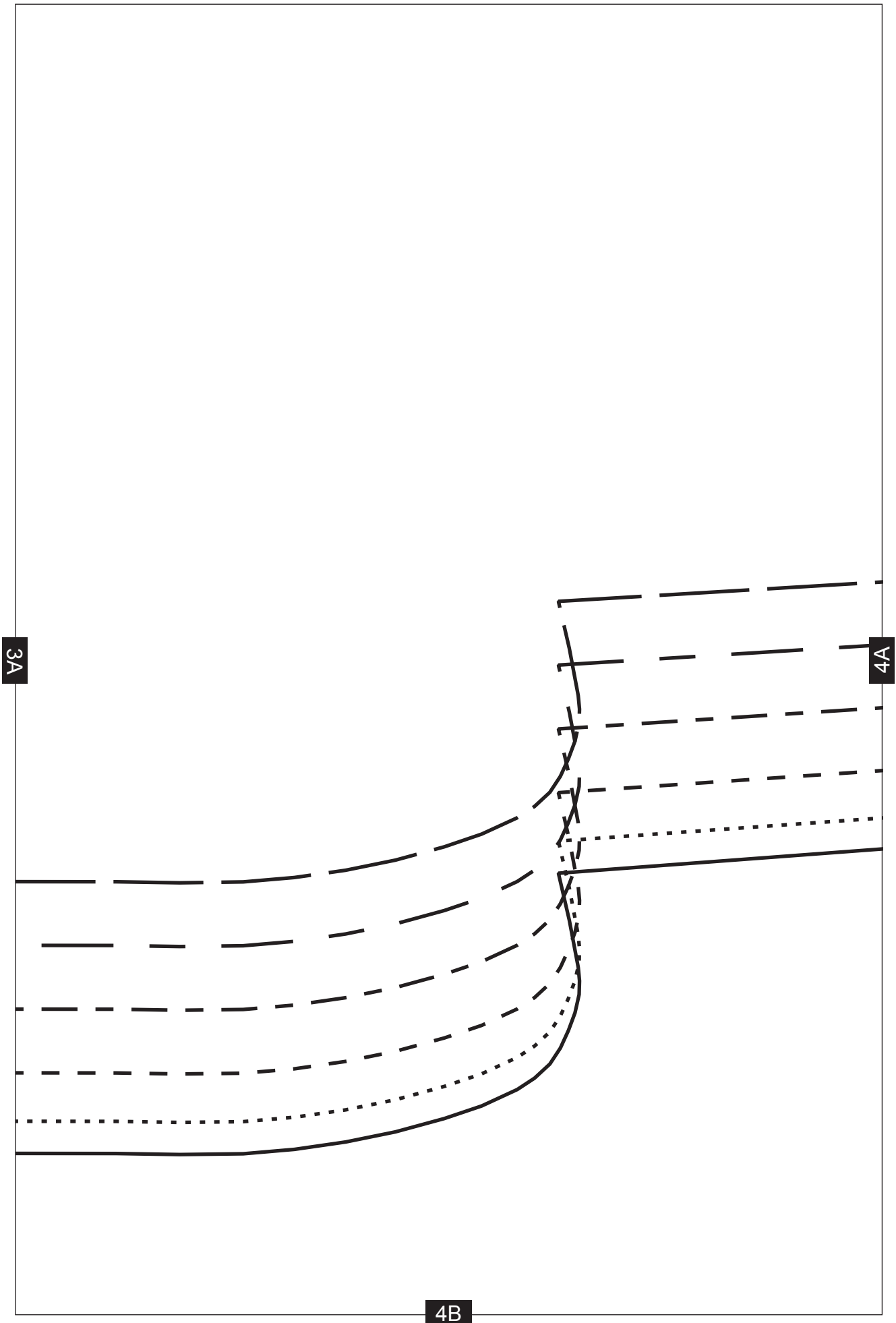
2B

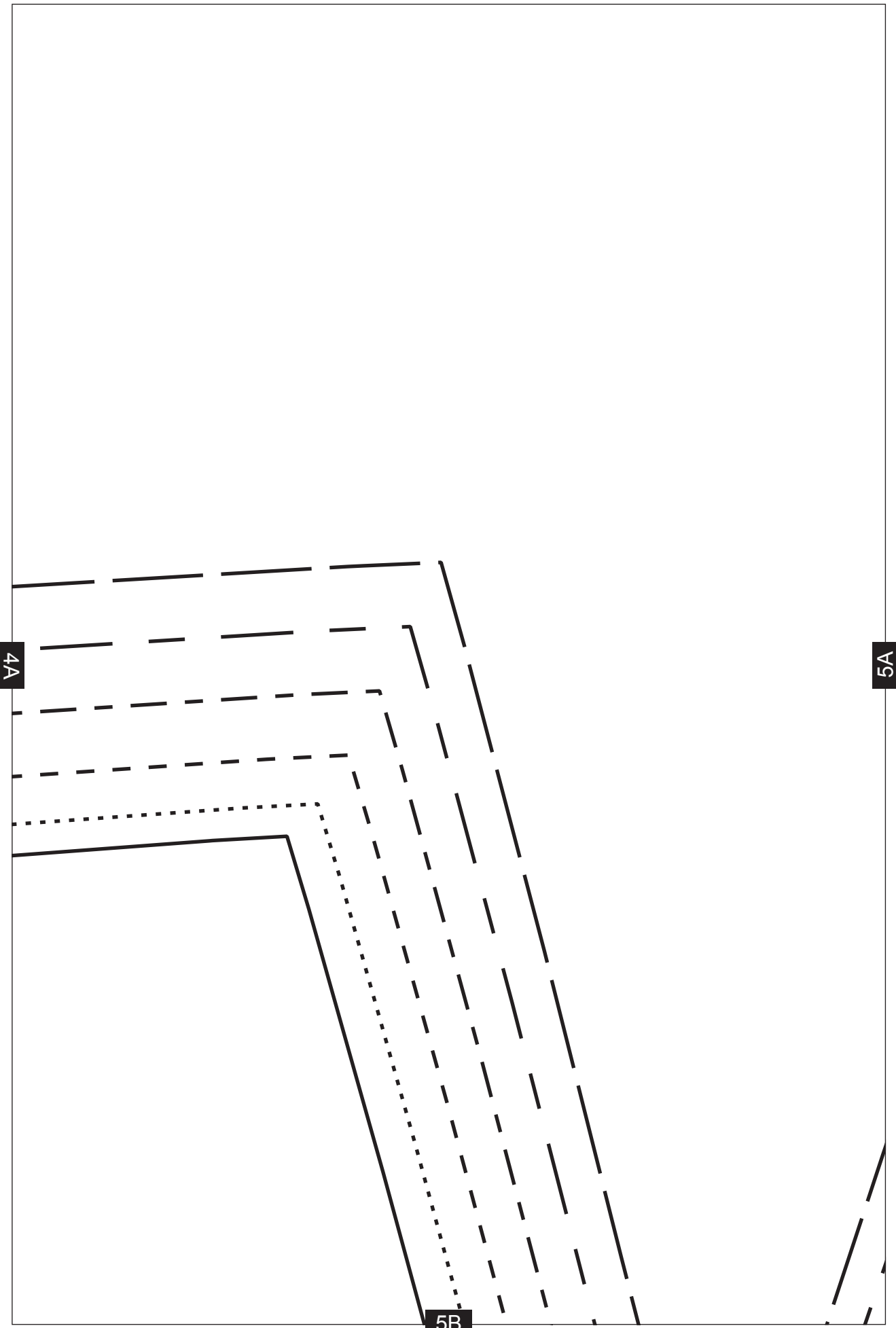


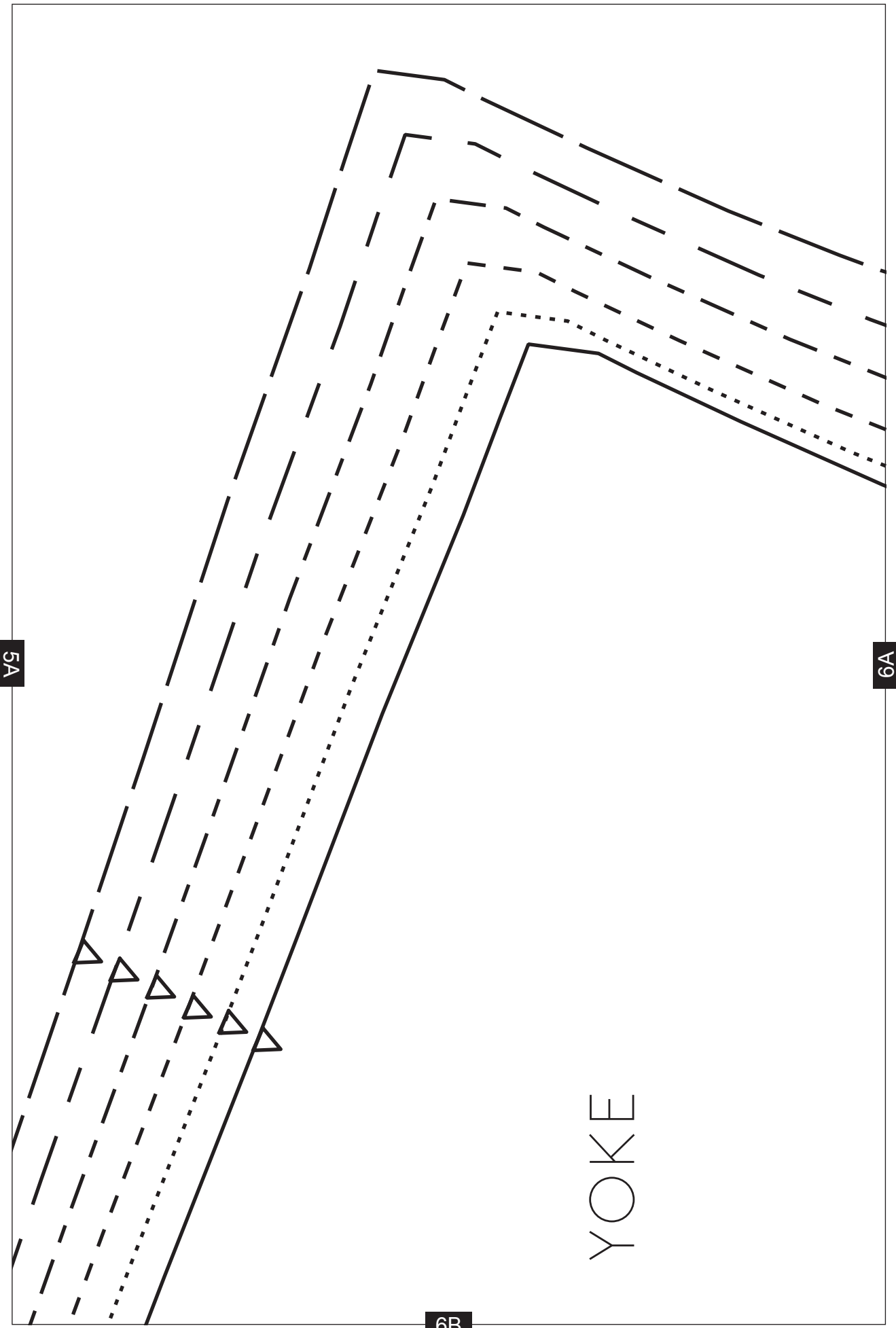
2A

3A

3B





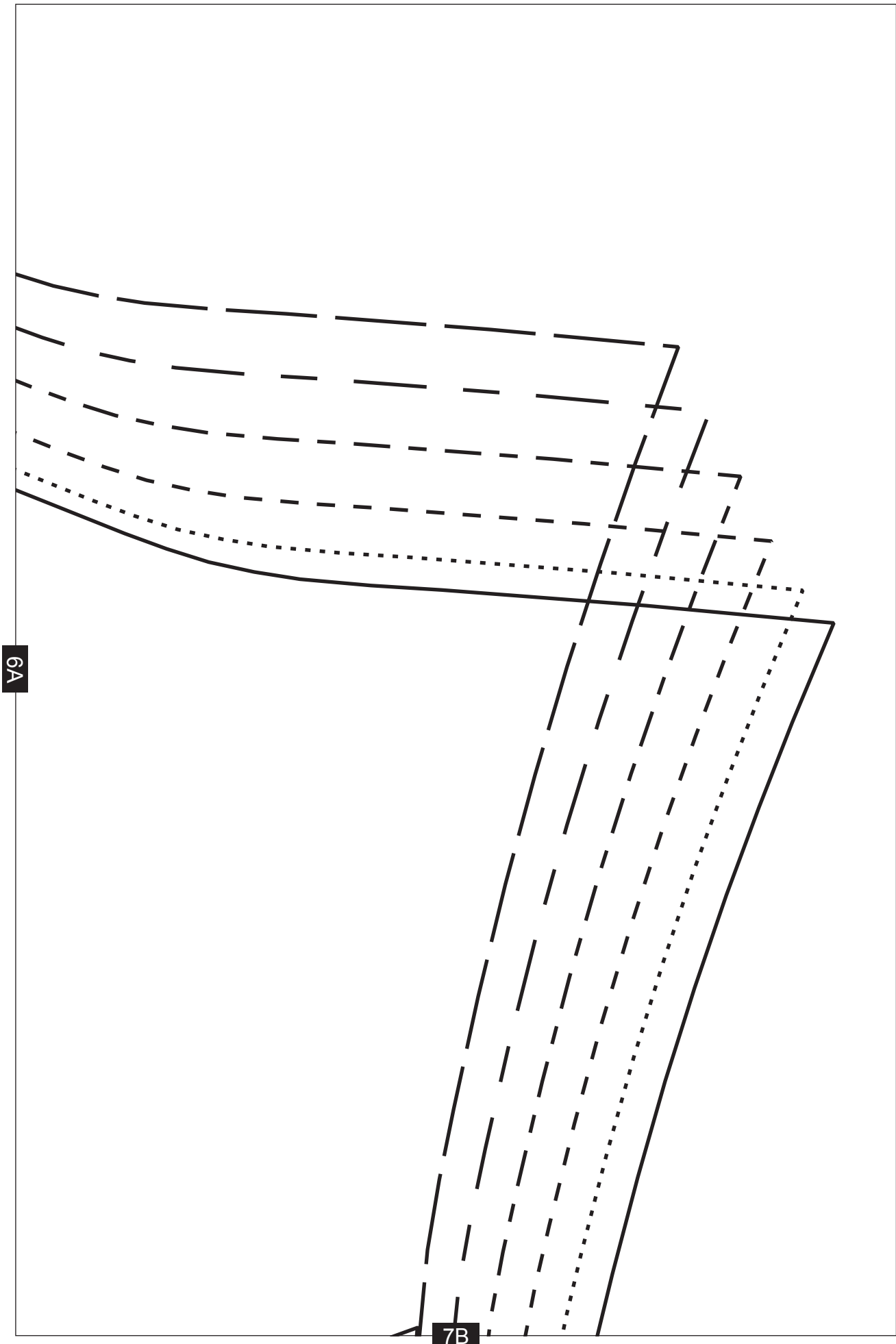


5A

6A

6B

YOKE



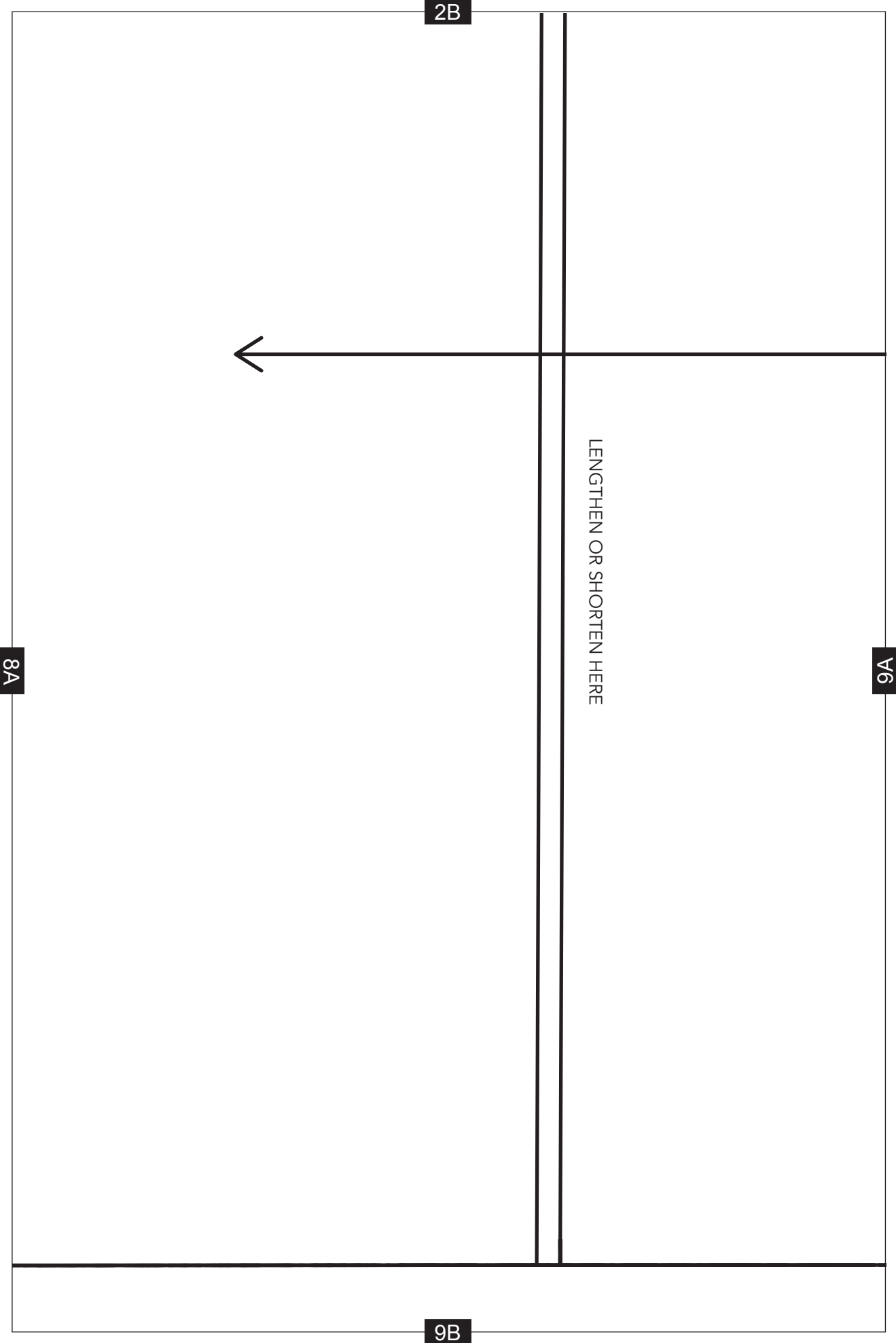
1B

TEST SQUARE  
10cm × 10cm  
4 inches × 4 inches

8A

8B





2B

8A

9A

9B

LENGTHEN OR SHORTEN HERE

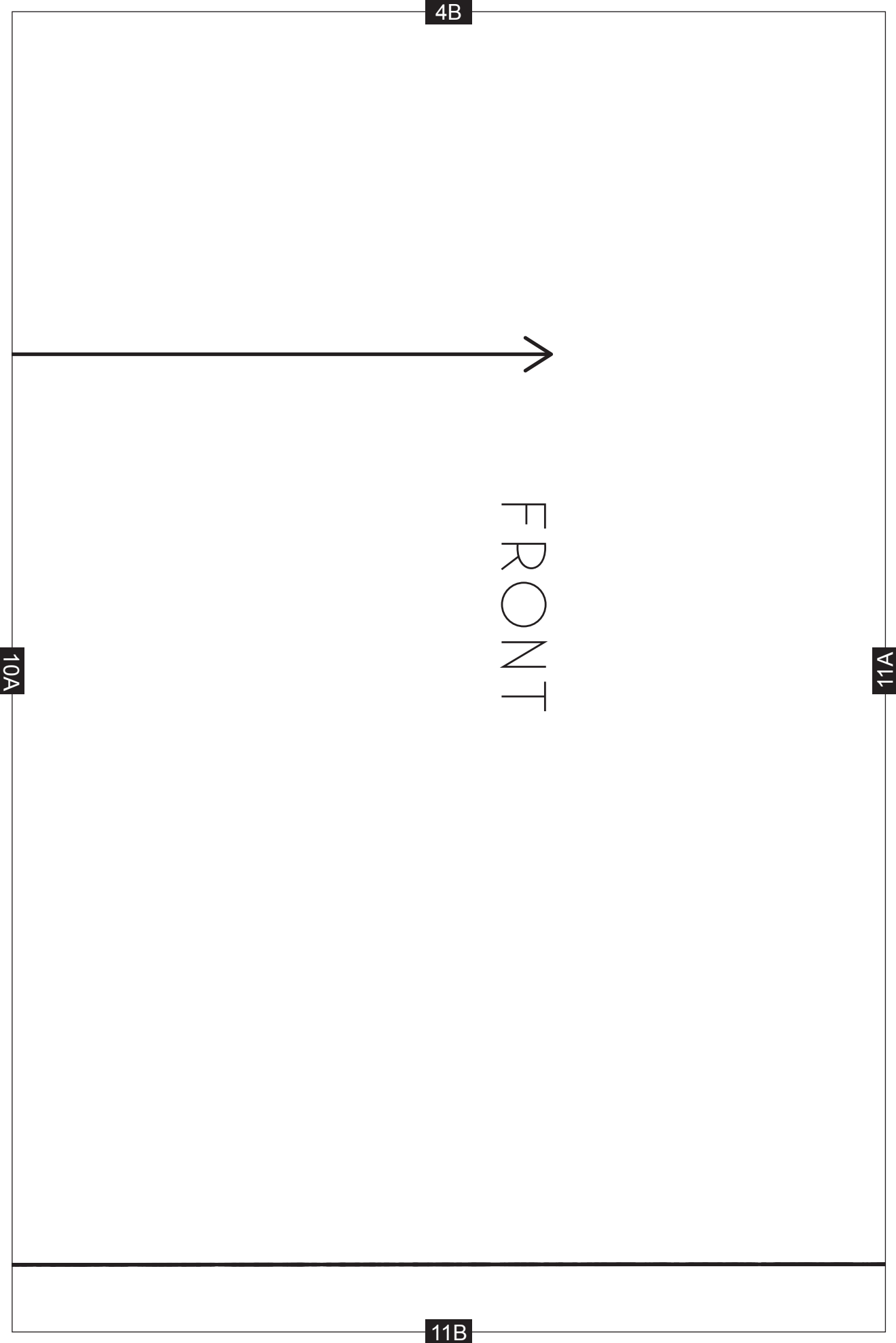
3B

9A

10A

CENTRE FRONT

10B



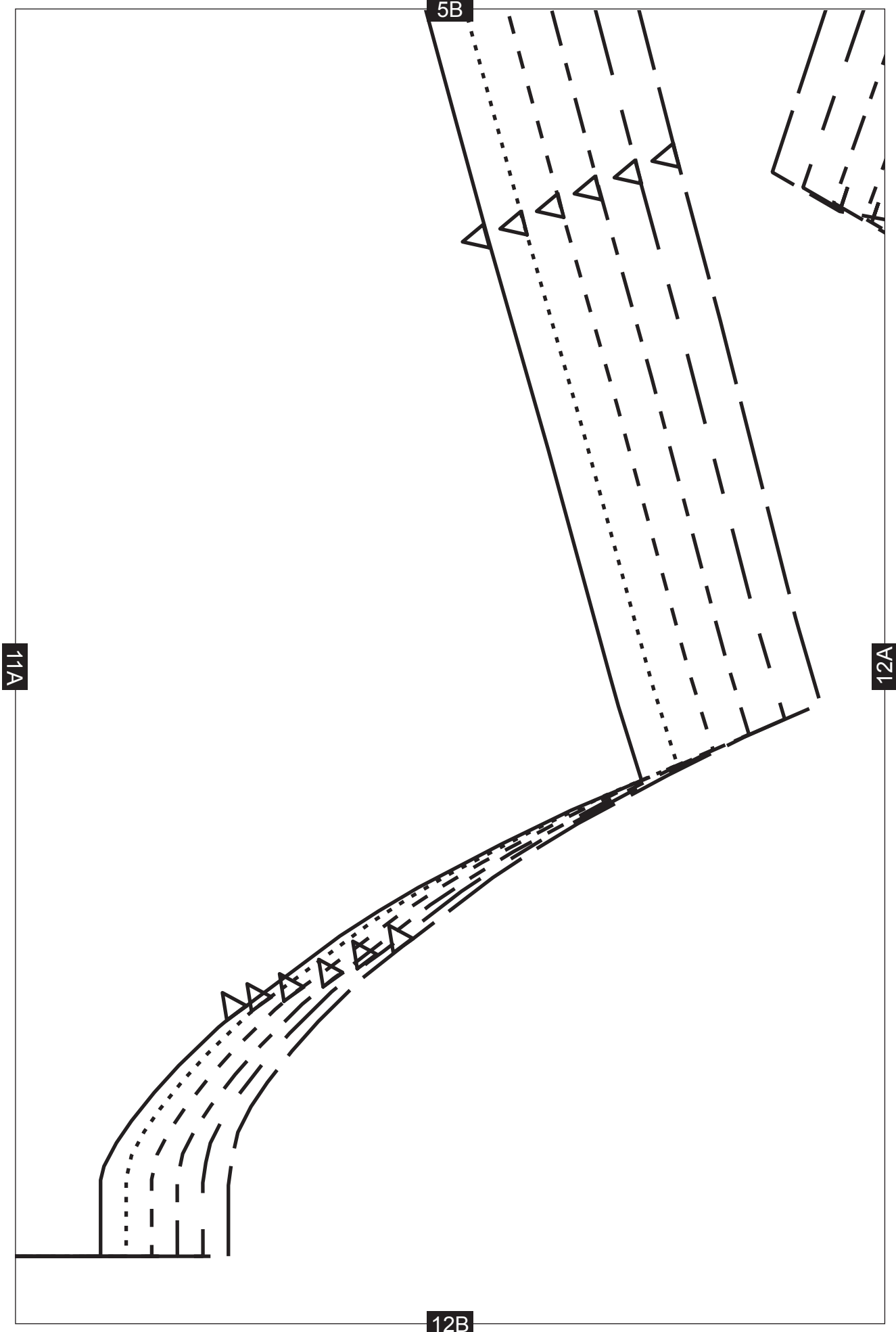
4B

10A

11A

FRONT

11B

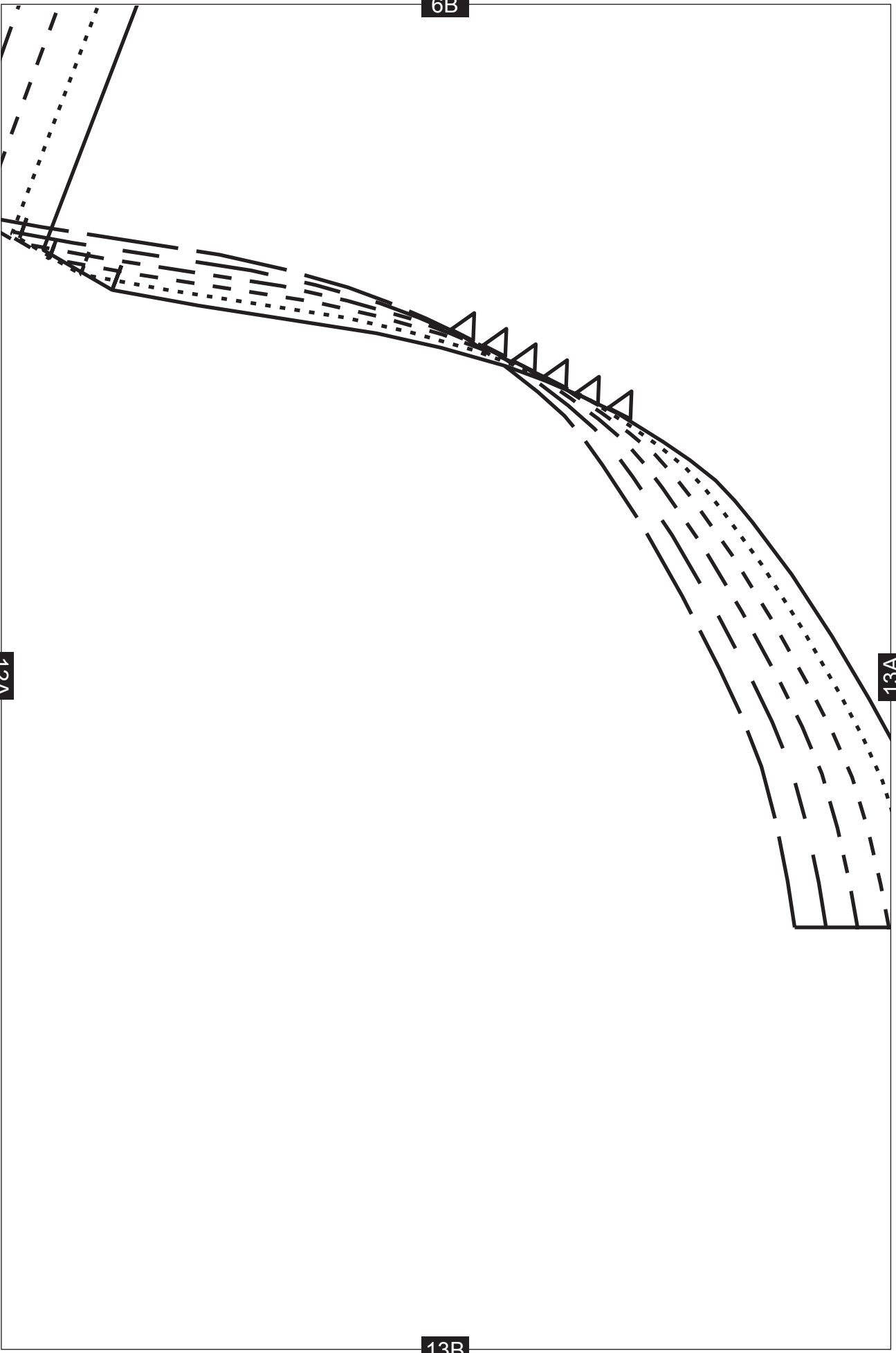


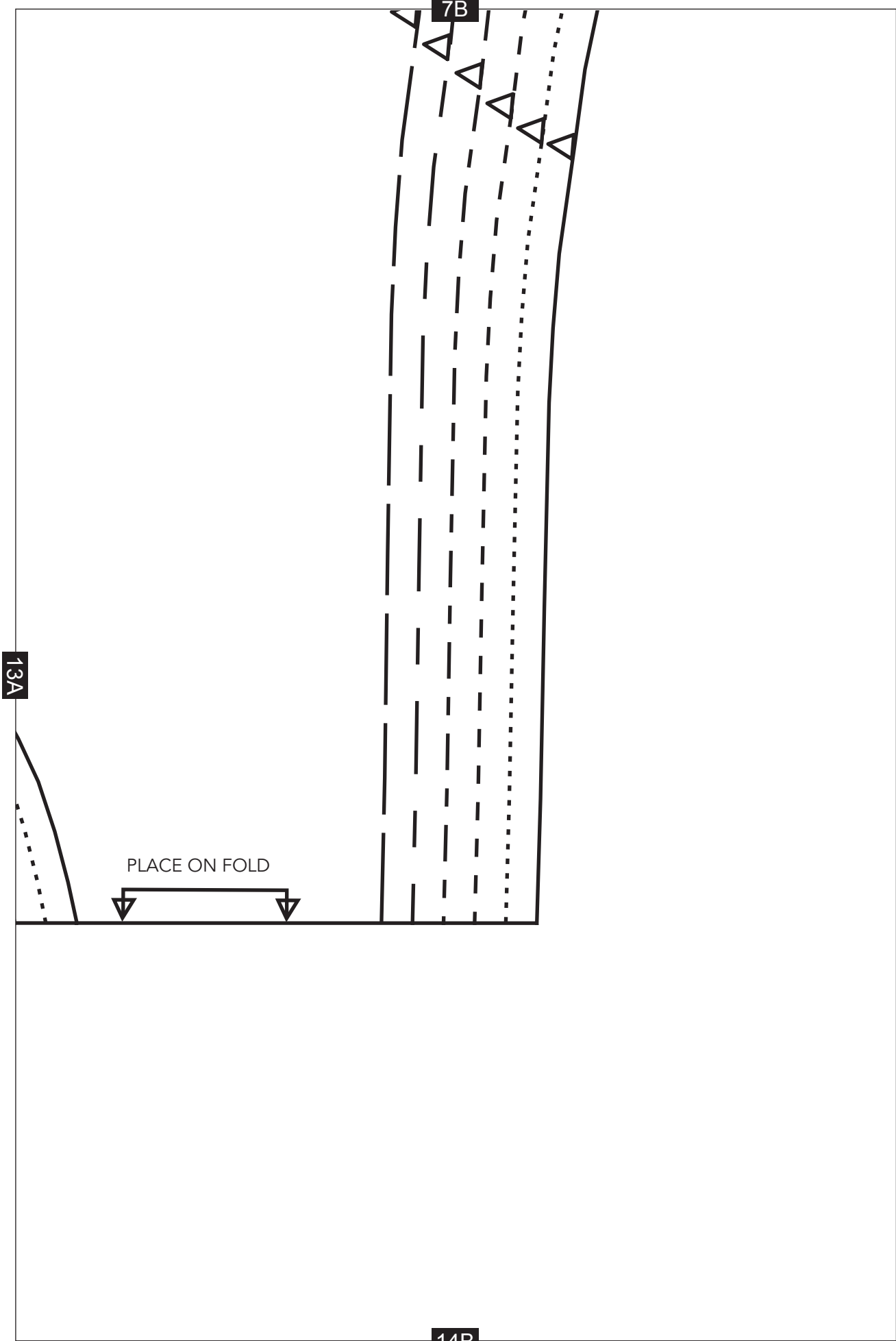
6B

12A

13A

13B





8B



15A

15B

9B

15A

16A

16B



10B

CENTRE BACK

16A

17A

17B

11B

17A

18A

BACK

18B

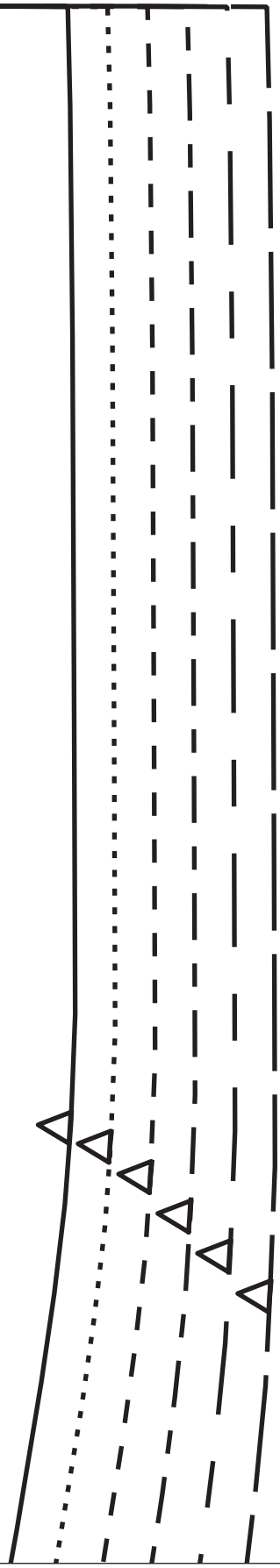


12B

18A

19A

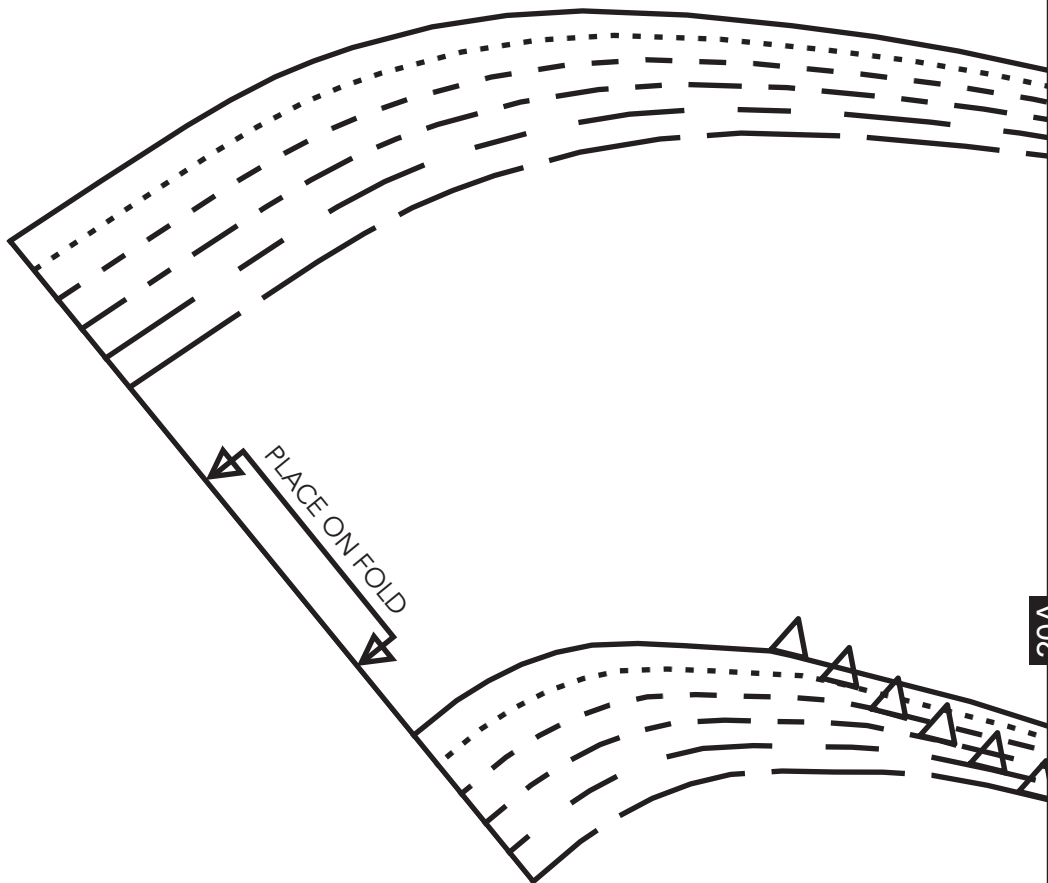
19B



13B

19A

20A



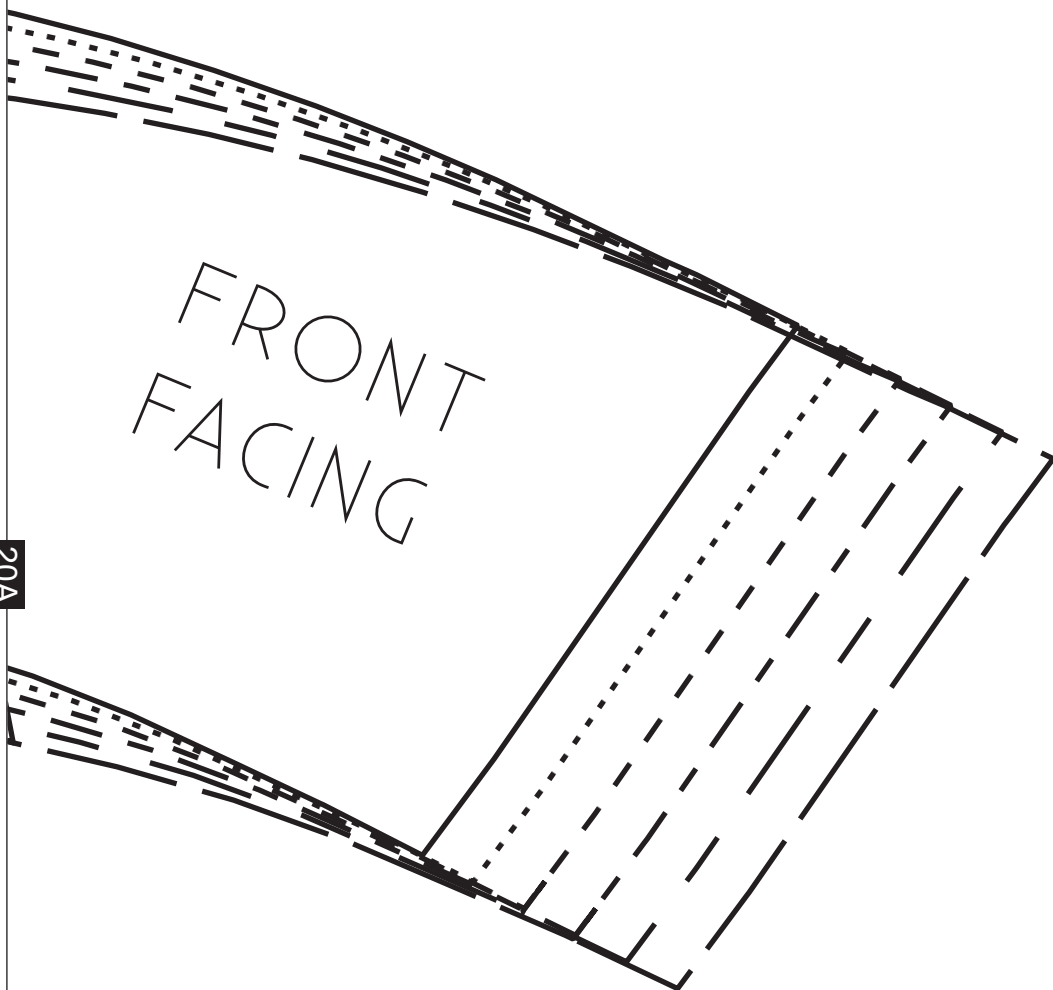
20B

14B

FRONT  
FACING

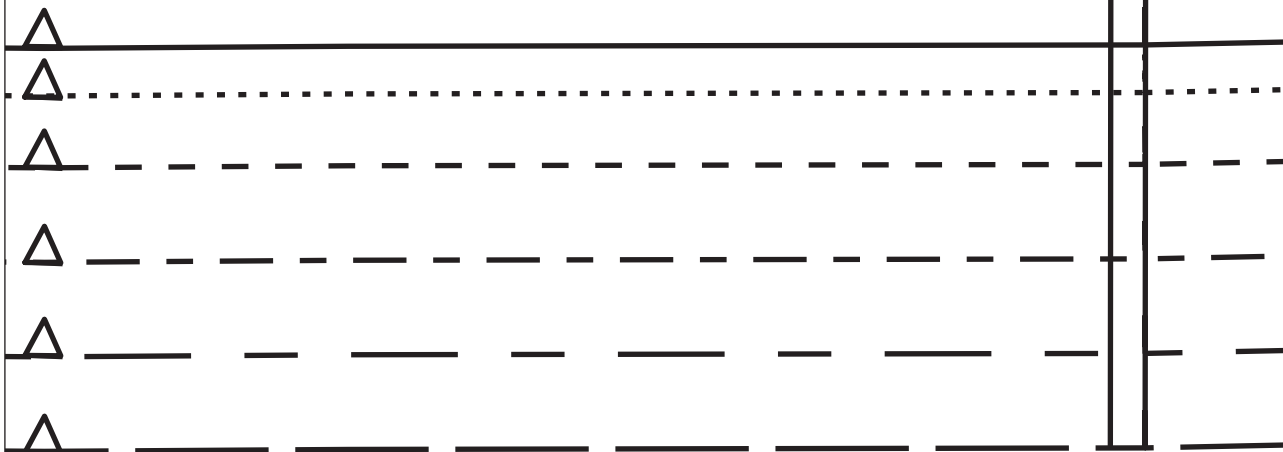
20A

21B



A set of handwriting practice lines. It consists of a solid top line, a dotted midline, and several dashed lines below. The dashed lines are arranged in a way that suggests they are for practicing letter height and placement, with some lines being shorter than others to indicate different letter sizes.

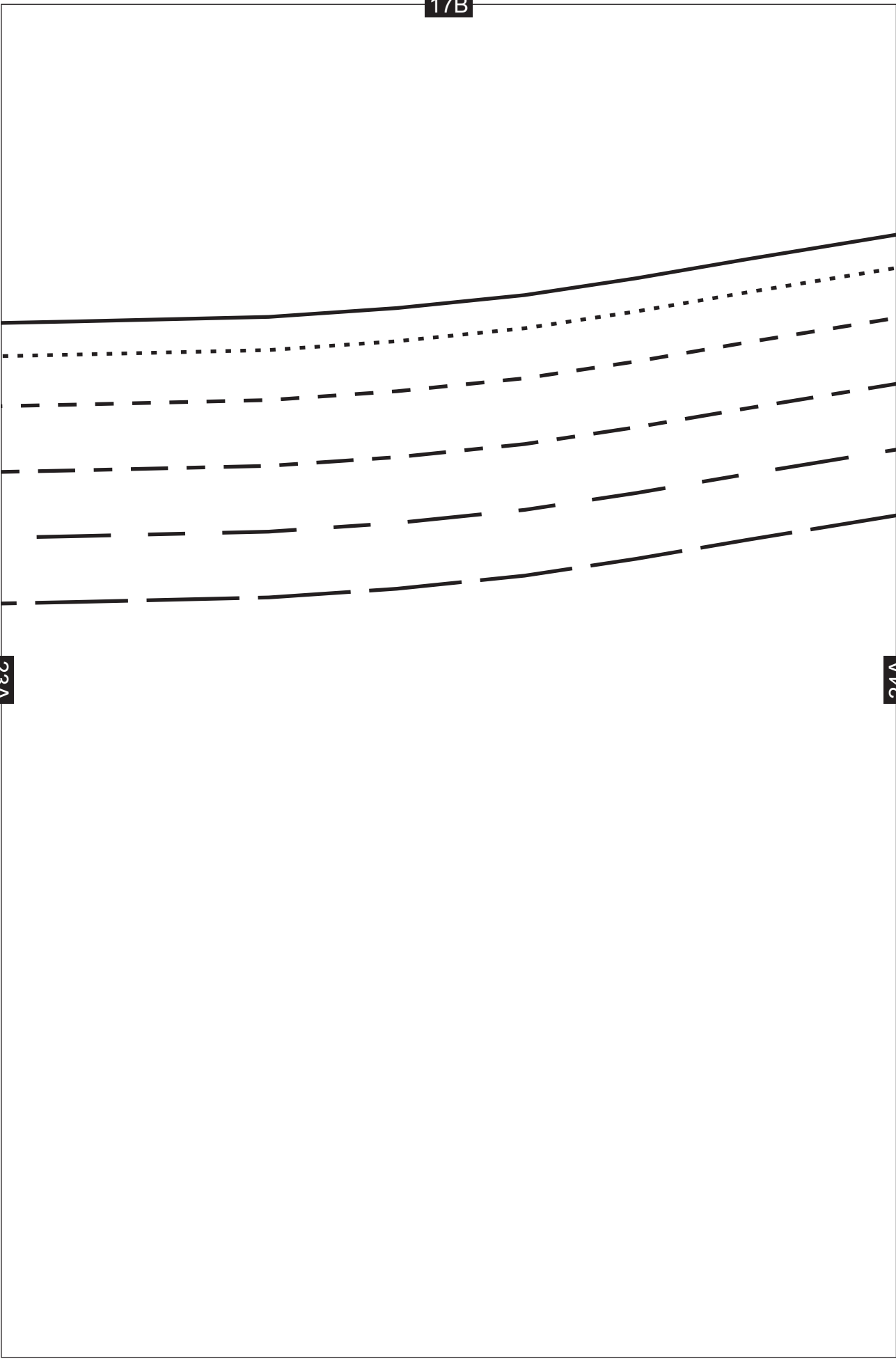
16B



22A

23A

17B

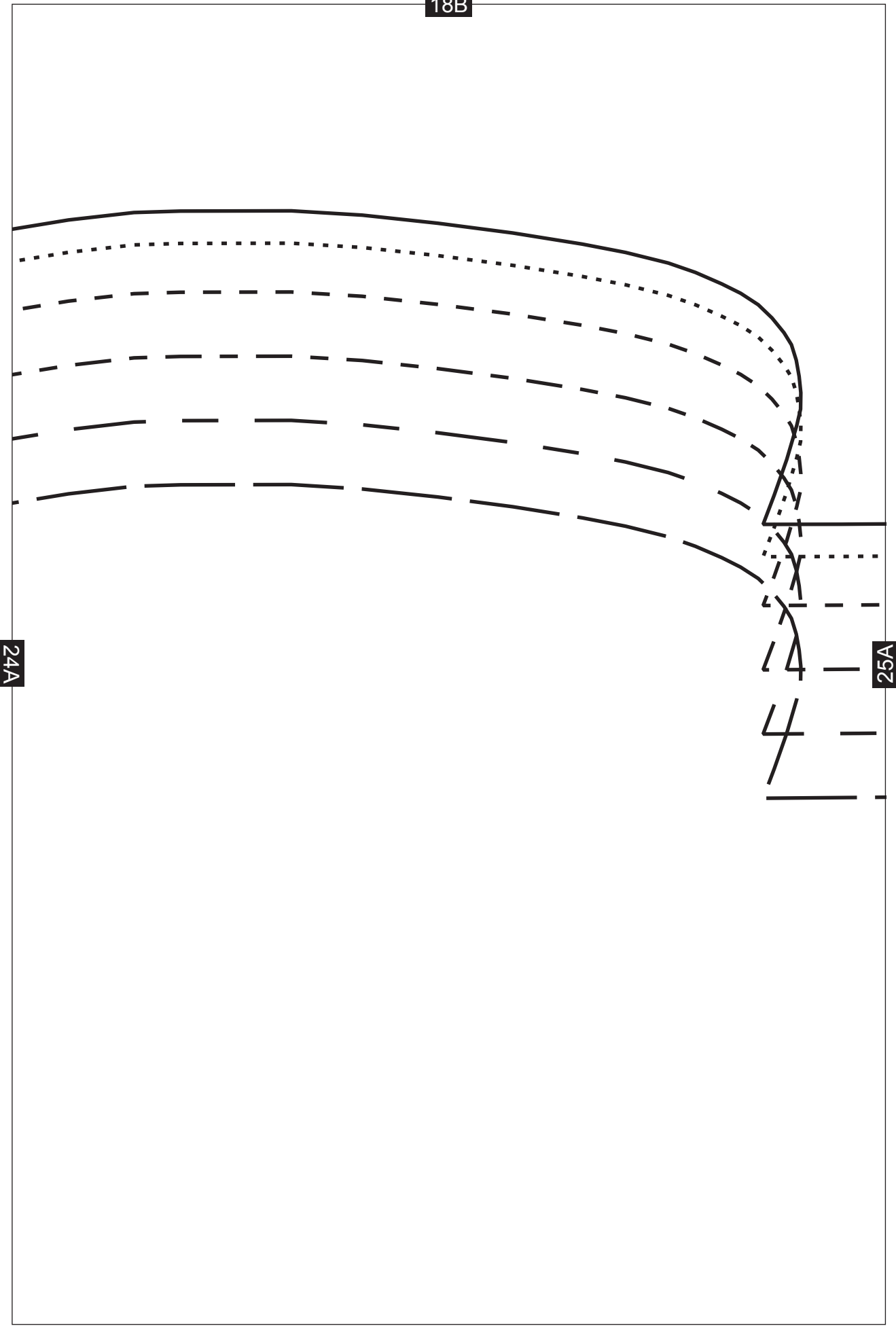


23A

24A



18B



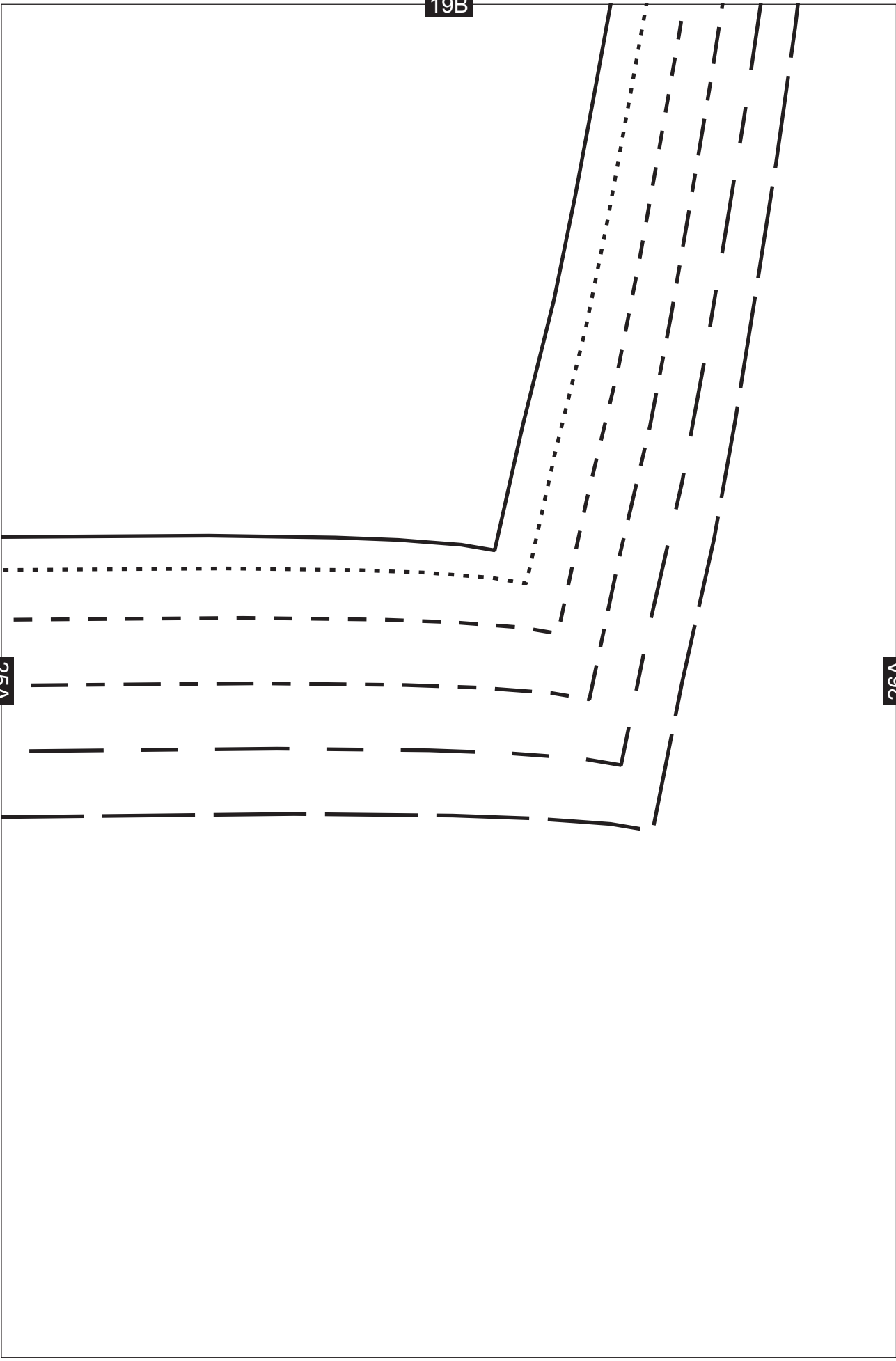
24A

25A

19B

25A

26A

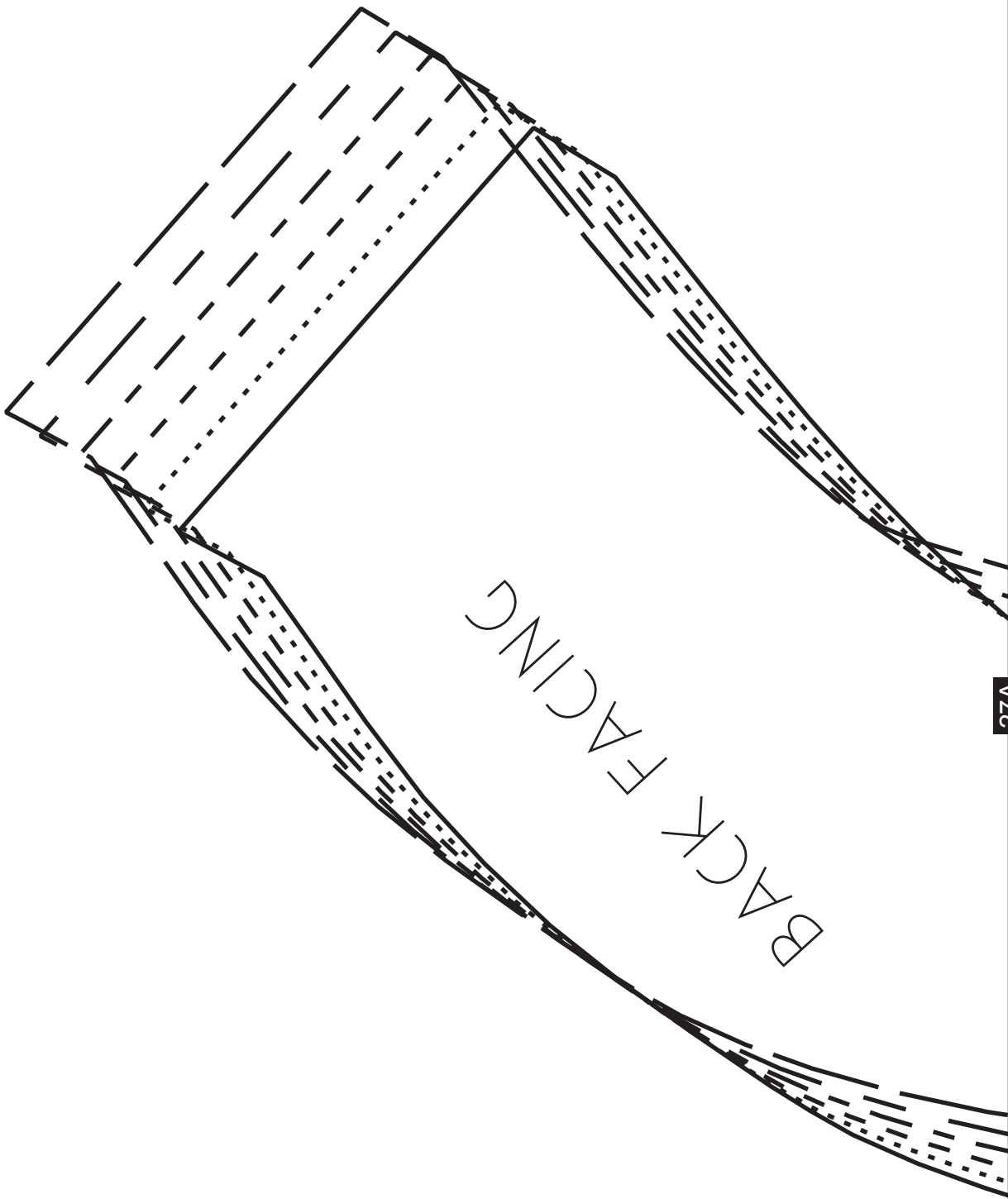


20B

26A

27A

BACK FACING



21B

27A

